

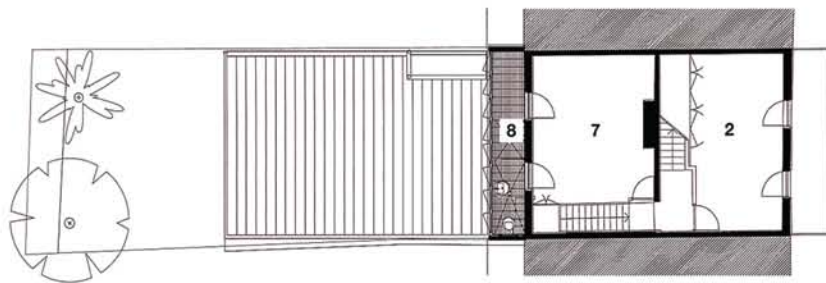
# TEXTURED RESPONSE

Brick surfaces, existing stone walls and various timber elements bring a high level of textural intricacy to this









- 1 Entry
- 2 Bedroom
- 3 Bathroom
- 4 Kitchen/dining
- 5 Living
- 6 Courtyard
- 7 Main bedroom
- 8 Ensuite

First floor



**THIS PAGE:** The main bathroom has retained vestiges of its past as a Victorian drawing room.

**ARCHITECT**

**Tom Ferguson**  
61 Denison Street  
Rozelle NSW 2039  
Tel: 0409 923 335  
Fax: +612 9550 1224  
Email: tom@tfad.com.au  
Web: www.tfad.com.au

**PRACTICE PROFILE**

Sole practitioner specializing in residential design of all scales.

**BUILDER**

Steele Associates

**CONSULTANTS**

**Engineer** Partridge Partners  
**Landscaping, interiors**  
Tom Ferguson  
**Lighting** Tom Ferguson, Light 2

**PRODUCTS**

**Roofing** Lysaght Klip-Lok, Colorbond 'White'; R3.0 insulation  
**External walls** Rendered brickwork, painted Dulux 'Antique White USA'  
**Internal walls** Rendered brickwork, painted Dulux 'Antique White USA'  
**Doors** Timber frames, finished in Sikksens 'Cetol HLS Ebony'; Dorma pivot doors; Centor hardware; Industrial Expression door pulls  
**Flooring** Bowral bricks laid on edge, 'Hereford Bronze'; LV1000 and 'Stainless' floor sealer, concrete, hand steel trowel, light machine polish; existing timber floors, sanded and sealed with water-based polyurethane; Supertuft Twist carpet  
**Lighting** Mito 80S MR-16 trimless recessed downlights; Brix Out exterior wall lights; Cubu 120 al ceiling lights; Solzi pendant; Punto halogen external wall lights; JSB Lighting 'Xenflex' strip light  
**Kitchen** Electrolux Gallery Collection appliances, integrated fridge; European ash veneer and solid Tasmanian oak cupboards and benchtops; solid Tasmanian oak shiplap ceiling; Intamix Borma taps  
**Bathroom** Intamix Borma tapware; Ardomus Vixel glass mosaic tiles; Hatria 'You & Me' sanitaryware; Industrial Expression accessories; Rogerseller shower heads  
**Shading** Creative Canvas awning  
**External elements** Bowral bricks, 'Hereford Bronze'; plantation Kwila 20 mm x 40 mm battens to timber screens

**TIME SCHEDULE**

**Design, documentation**  
4 months  
**Construction** 8 months

**SITE SIZE**  
146 m<sup>2</sup>

**PROJECT COST**  
\$250,000

**PHOTOGRAPHY**  
Simon Kenny