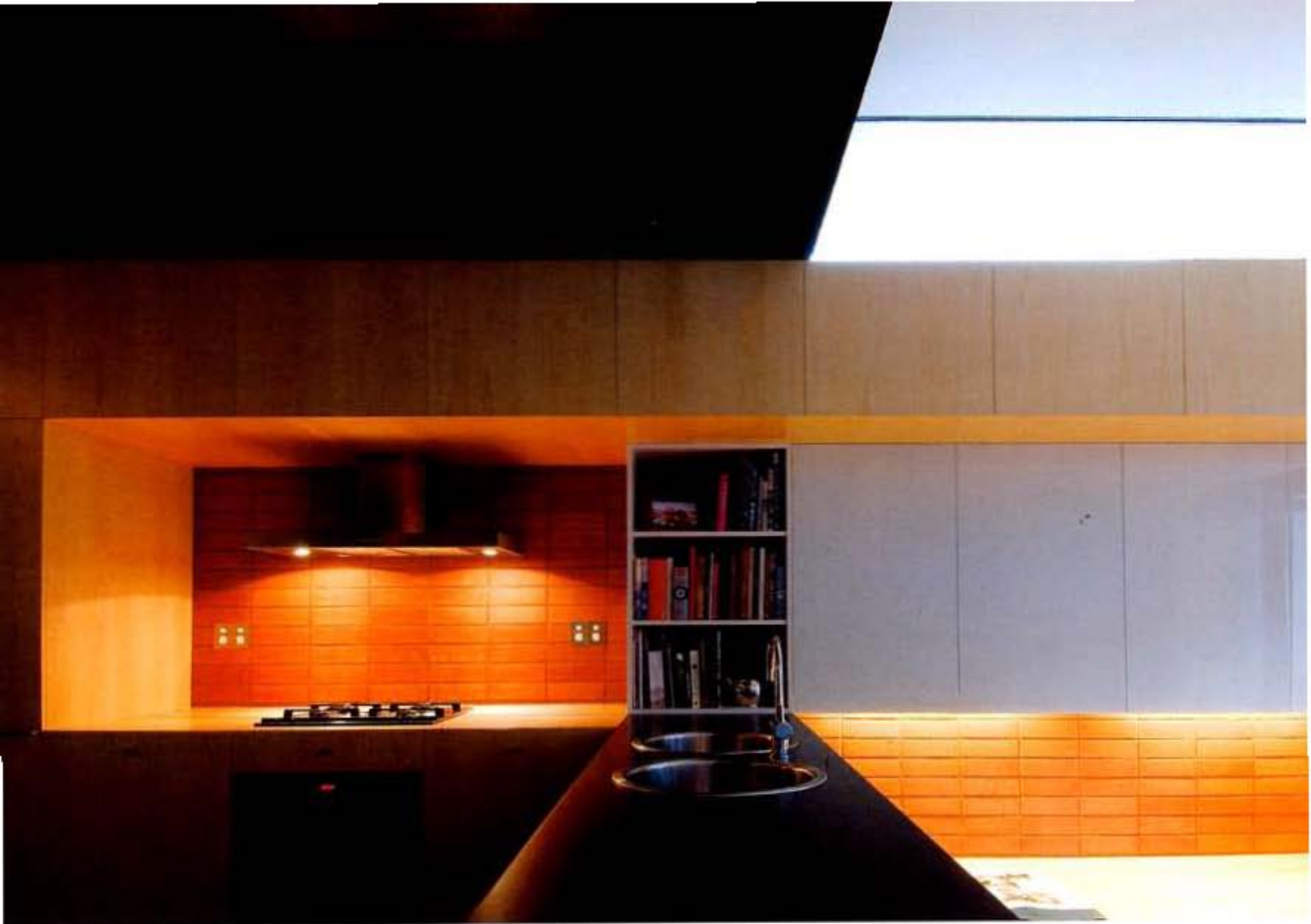


EVOLUTION SITE





Historical Counterpoint

Text
Paul McGlück
Photography
Simon Kenny

This is a renovation and extension of an 1880s sandstone terrace in the formerly industrial and working class Sydney suburb of Rozelle. It involved the addition of a new kitchen/living/dining area at the rear, two new bathrooms and general renovation of the other rooms.

We tend to think of extensions and renovations as purely functional exercises. However, there are also metaphorical, cultural and emotional dimensions to adapting existing buildings to new uses which is implicitly acknowledged in the term 'adaptive reuse'. But this term tends to be applied to public buildings rather than houses.

The journey through the house – stepping down over a series of levels – acts as an implied narrative

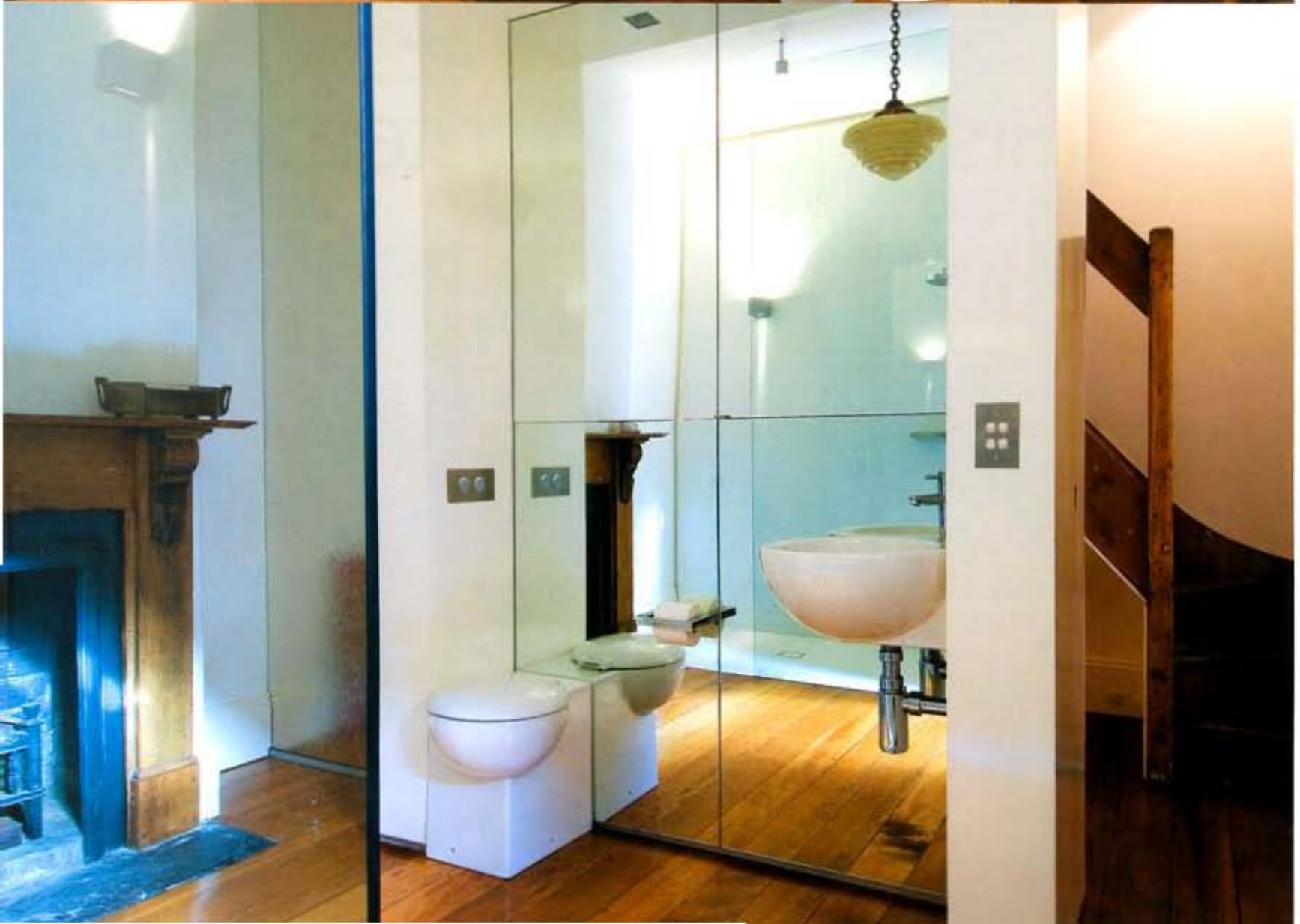
In fact, every residential extension and renovation is an exercise in adaptive re-use and an opportunity to add to the inevitable layering of use, forms and materials which has taken place since the house was first inhabited.

Architect Tom Furguson took this as his starting point when he began planning the make-over of his own home. His aim was to create a space 'that layered

materials and forms to create a certain complexity of occupation.' To do this he adopted a number of complementary strategies involving choice of materials and arrangement of forms within a broad spectrum of intervention ranging from zero to the unapologetic insertion of contemporary materials and forms.

At the zero end of the spectrum, the original window frames, stairway, timber floors and rough, 'vernacular' sandstone wall which once formed the rear of the house have been retained. A brick floor in the living area hints that this was once the backyard and appropriately continues outside to form the rear courtyard. The same bricks are used on the wall backing the cooktop and built-in living room credenza to set up a counterpoint of materials with the other hard surfaces – the polished concrete floor in the kitchen and the sandstone wall. Likewise, the connection with the outside is supported by the way in which the joinery continues out under the external overhang, and in the form of an 'internal' garden court off the kitchen/dining area where the Kivika timber screen sets up another counterpoint with the Tasmanian Oak kitchen ceiling and oak return and European Ash joinery.

The counterpoint of materials (timber, glass and stone) is reflected in the counterpoint of forms, referred to by the architect as "three-dimensional forms that slot into one-another" – a fugue-like arrangement of vertical and horizontal elements.



which – like a Bach fugue – are simultaneously dynamic and calming.

The journey through the house – stepping down over a series of levels – acts as an installed narrative, evincing an emotional rapport with the house's history.

The two new bathrooms both explicitly sustain a connection with the past, although the spacious downstairs conversion of a living space is especially bold, leaving a literal connection to the corridor outside (the timber flooring extends into the bathroom) and a quirky reminder of past use by the retention of the original freestable.

Here the use of transparency and mirrors echoes the extensive use of glazing in the extension to set up further metaphorical overlands: a house which reveals and reflects its own history.

Architect Tom Ferguson
Builder Steele Associates
Structural Engineer Partridge Partners
Joiner S&C Carr (5th Carr)

Tom Ferguson 0409 923 335

Flooring

Hardcore Bronze bricks from Bowral Brickworks (Austral Brick Company) on living room floor, courtyard and parking pads for cockpit and bulbin credenza. Carpet is Supermat Groove, 'Bondage' from Carpet Design Centre. Kitchen and dining area floor is complete polished and sanded. Floating timber floors sanded and stained with a water-based polyurethane. Tiles are Artedomus 'Silver glass mosaic' (grey 05x15) and green 05x30.

Austral Brick Company (61 2) 5630 7722
Carpet Design Centre (61 2) 9660 8008
Artedomus (61 2) 9557 5060

Joinery

Wall units are in European Ash veneer (ashboards) with mild perchtops and mild polyurethane. Kitchen ceiling and oak return in solid Tasmanian Oak (90% oak, 10% Walnut stain) with mild polyurethane. Timber joinery is plantation Kauri timber.

Bathroom Fixings

Tapsware is 'Bentley' from Accent International. Bathroom cabinetryware is 'Hania' from Gieffe. Bathroom accessories from Industrial Expression.

Accent International (61 2) 8982 2633
Gieffe (61 2) 9716 3333
Industrial Expression (61 2) 0212 5890

THE
bath house



153 sailors bay rd northbridge nsw 2063
ph (02) 9967 4000 • fax (02) 9967 4011
info@bathhouse.com.au