

## GLAZED PAVILION

CHRISTOPHER POLLY ARCHITECT

**THE HIRD BEHAN HOUSE** in Sydney's Newtown originally presented the challenge of a north-facing heritage terrace house, framed by high-density apartments and surrounded by the noise of an arterial road and a flight path to Sydney's main airport. The clients, a professional couple, had provided a brief that prioritized opening up the back of the house to light and natural warmth while maximizing privacy and limiting noise. About half the budget was allocated to these additions while, inside the terrace, a substantial amount of work on repairing and upgrading existing rooms was also undertaken.

A flow of cohesive elements throughout the resulting design enfolds the original structure into a home that feels both secluded and outward facing, capturing the day's sunlight in its movement from east to west. A single-storey addition to the rear of the property provides a spacious kitchen, breakfast bar and dining area, opening out through a rear glass wall of sliding doors to a brick-paved courtyard. Christopher Polly has ensured maximum light is admitted to this space via a wraparound continuation of floor-to-ceiling glass on the south-eastern corner of the addition. Above the kitchen, where the glass wall ends, a long frameless highlight window becomes a centrepiece of the design. With no visible column, this window optimizes light while providing framed views of tree canopy and sky.

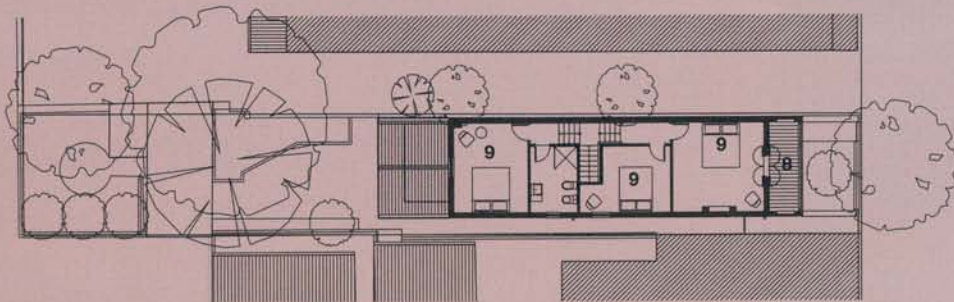
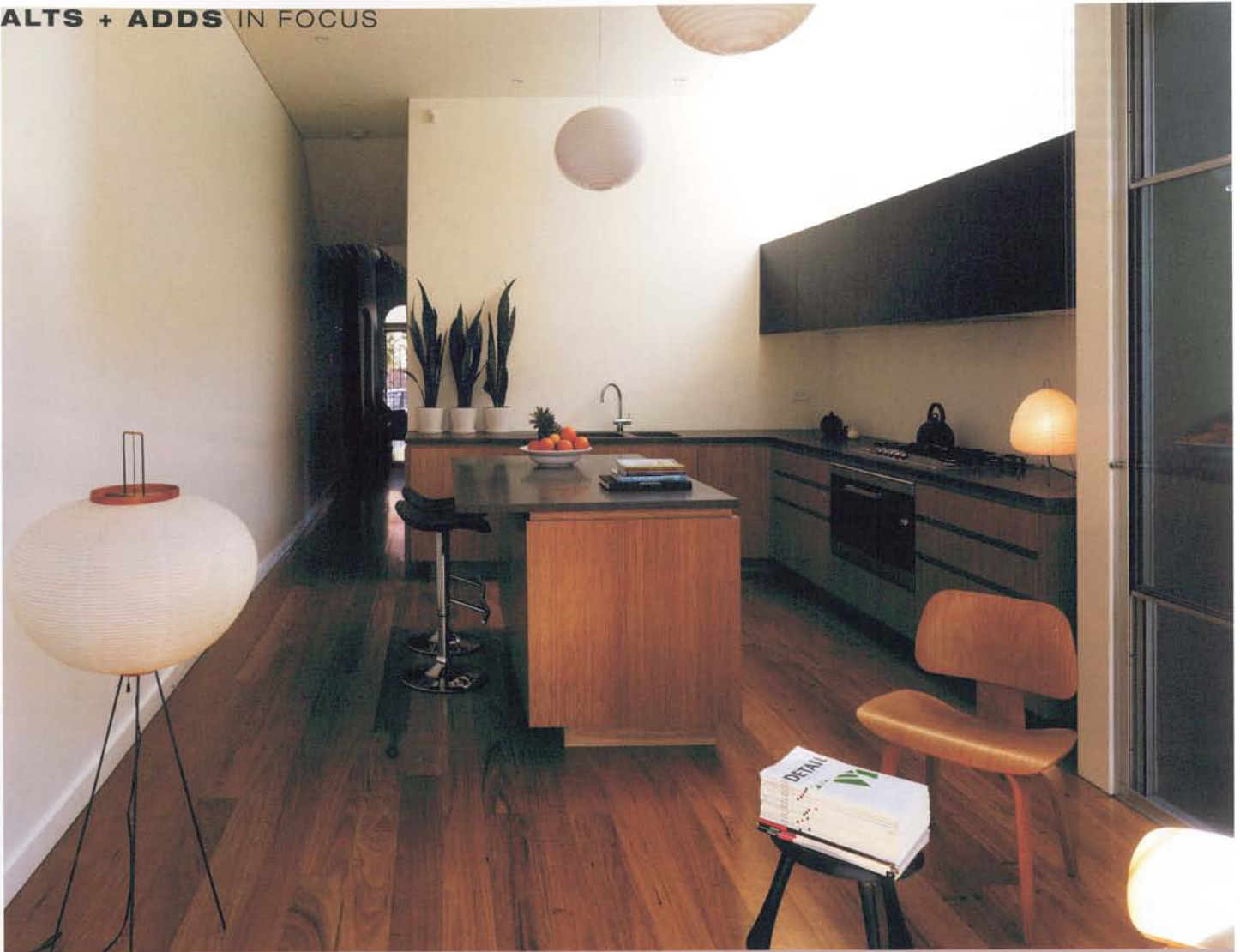
A steel profile head section along the facade conceals the internal blinds and external lights, which indirectly illuminate the courtyard at night. Privacy from surrounding properties is protected with an overhanging roof, a projecting timber wall and a high courtyard wall to the west. Noise is countered with selected double-glazing throughout the house, as well as thickened single-glazed doors and windows that additionally modulate thermal comfort.

The design leaves a footprint that is consciously modest, utilizing recycled tallowwood and blackbutt timber and recycled bricks for external paving. Underfloor thermal insulation was installed along with roof and ceiling insulation for additional energy efficiency. And, as a final open-ended touch, the potential to accommodate a future first-floor addition has been incorporated into the project, ensuring that the conversation between old and new, environment and structure, continues. H

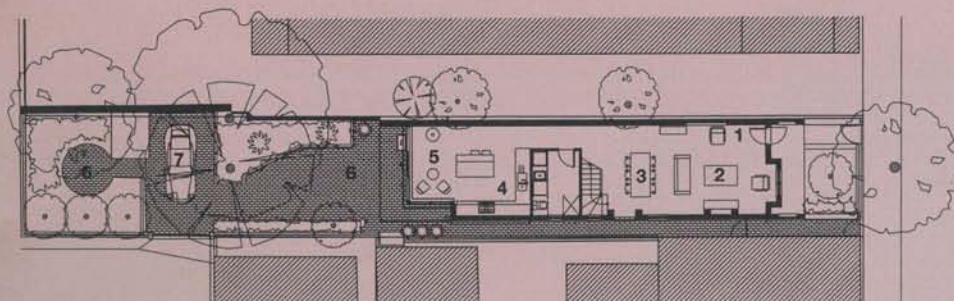


**OPPOSITE:** Generous glazing at the rear of the single-storey extension connects it to the courtyard beyond.  
**THIS PAGE:** Pendant lights provide the main source of light in the kitchen. Concealed downlights illuminate the work surfaces.



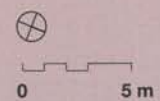


First floor



Ground floor

THIS PAGE: Bamboo veneer joinery and a simple palette were used to update the kitchen. OPPOSITE: An array of window types were used for the rear walls, contributing a sense of lightness to the room.



- 1 Entry
- 2 Living
- 3 Dining
- 4 Kitchen
- 5 Sitting
- 6 Courtyard
- 7 Carport
- 8 Terrace
- 9 Bedroom



  
**DETAIL**  
The Art of Living